



Engine	Cummins 6LTAA8.9-C325
Rated Power	241 kW (323 hp / 328 ps) @ 2,000 rpm
Net Power	233 kW (313 hp / 317 ps) @ 2,000 rpm
Bucket Capacity	1.6 m ³
Maximum Dig Depth	7,340 mm
Operating Weight	35,000 kg

936E EXCAVATOR

936E SPECIFICATIONS >>>

PERFORMANCE PARAMETERS

Operating Weight	35,000 kg
Std. Bucket Heaped Capacity (Referenced)	1.6 m ³
Maximum Travel Speed	5.5 km/h
Swing Speed	10 rpm
Drawbar Pull	320 kN
Bucket Digging Force (ISO)	252 kN
Arm Digging Force (ISO)	185 kN

ENGINE

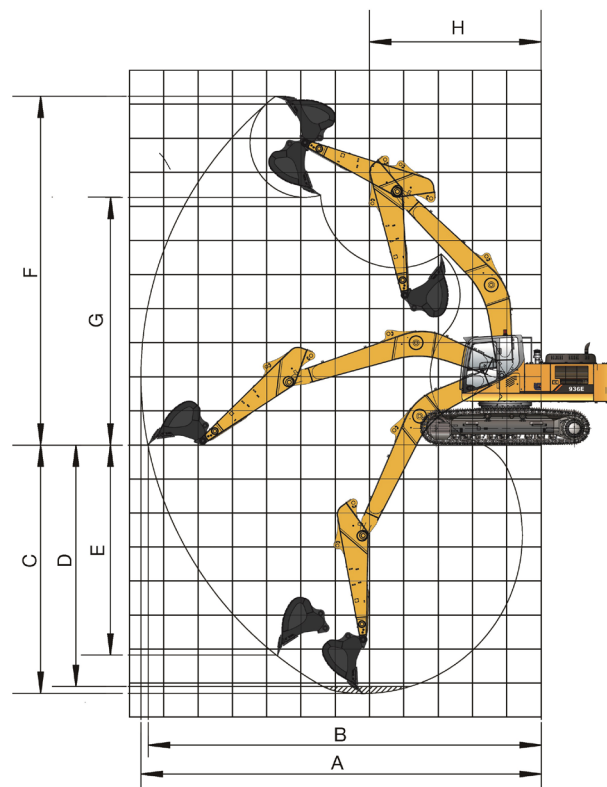
Emission Regulation	Tier 2 / Stage II
Make	Cummins
Model	6LTAA8.9-C325
Rated Power	241 kW (323 hp / 328 ps) @ 2,000 rpm
Net Power	233 kW (313 hp / 317 ps) @ 2,000 rpm
Peak Torque	1,400 N·m @ 1,400 rpm
Number of Cylinders	6
Displacement	8.9 L

UNDERCARRIAGE

Number of Shoes per Side	48
Number of Upper Rollers per Side	2
Number of Bottom Rollers per Side	9

DIMENSIONS

A Shipping Length	11,167 mm
B Shipping Height	3,530 mm
C Track Gauge	2,590 mm
D Undercarriage Width	3,190 mm
E Track Length	4,944 mm
F Length to Center of Rollers	4,050 mm
G Overall Width of Upper Structure	3,163 mm
H Tail Swing Radius	3,550 mm
I Counterweight Ground Clearance	1,172 mm
J Overall Height of Cab	3,175 mm
K Min. Ground Clearance	532 mm



WORKING RANGE

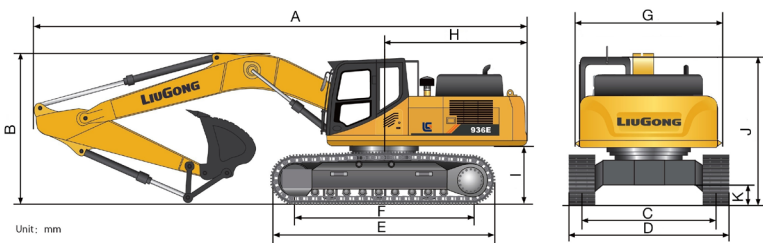
Boom Length	6,400 mm
Arm Length	3,200 mm
A Max. Digging Reach	11,100 mm
B Max. Digging Reach on Ground	10,900 mm
C Max. Digging Depth	7,340 mm
D Max. Digging Depth, 2.44 m (8') level	7,180 mm
E Max. Vertical Wall Digging Depth	6,460 mm
F Max. Cutting Height	10,240 mm
G Max. Dumping Height	7,160 mm
H Min. Front Swing Radius	4,465 mm

HYDRAULIC SYSTEM

Main Pumps Total Flow	600 L/min
Relief Pressure, main	34.3 MPa

SERVICE CAPACITIES

Fuel Tank	620 L
Engine Oil	27.3 L
Cooling System	35 L
Hydraulic Reservoir	240 L
Hydraulic System Total	450 L



Unit: mm

Guangxi Liugong Machinery Co., Ltd.

No. 1 Liutai Road, Liuzhou, Guangxi 545007, PR China
T: +86 772 3886124 E: overseas@liugong.com
www.liugong.com

Specifications and designs are subject to change without notice. Machines shown may include optional equipment. Liugong standard and optional equipment may vary from region to region. Please consult your Liugong dealer for information specific to your area. Engine power kW is converted to horsepower (1 kW=1.3596 ps and 1 kW=1.3410 hp) in this file.

01/2021 Designed by LiuGong